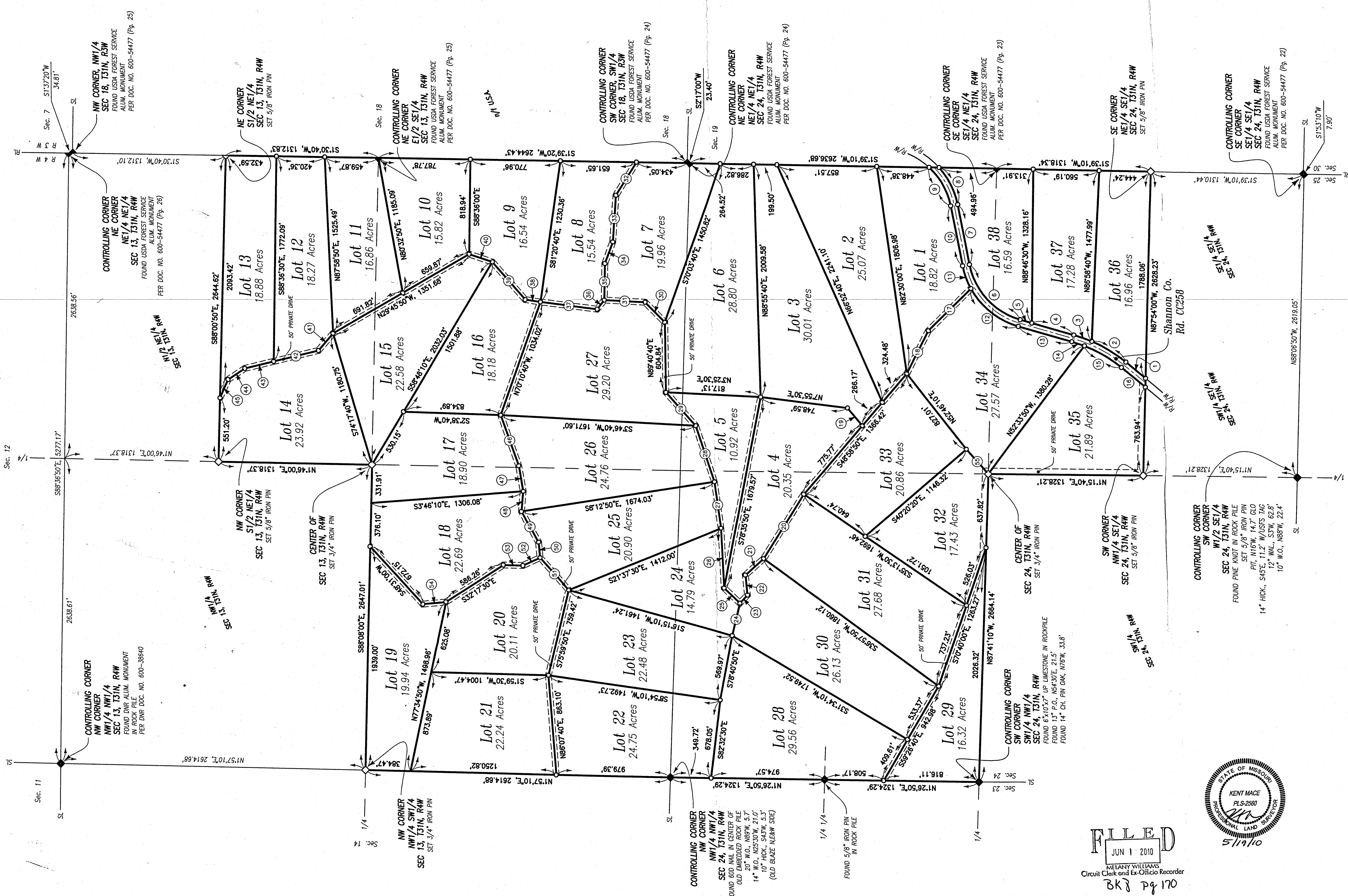


Plat of Antler Ridge

Being all of S1/2 Sec. 13, S1/2 NE1/4 Sec. 13, all of
N1/2 Sec. 24 & N1/2 SE 1/4 Sec. 24 all in T31N, R4W
Shannon County, Missouri



Missouri East Zone
GPS Observation

0 400' 800'

SET 1/2" IRON PIN
50' PRIVATE DRIVE

No.	Bearing/ Radius	Distance/ Arc	Chord
1	N40°11'10"E	220.13'	
2	1230.00'	341.84'	S32°13'30"W, 340.74'
3	1230.00'	162.53'	S20°28'40"W, 162.42'
4	N16°41'30"E	374.03'	
5	N12°11'30"E	102.88'	
6	620.00'	679.96'	N48°06'40"E, 646.39'
7	N79°31'40"E	528.23'	
8	680.00'	360.40'	S64°20'40"W, 356.20'
9	620.00'	386.09'	S61°41'20"W, 379.88'
10	S79°31'40"W	528.23'	
11	680.00'	329.85'	N70°41'40"E, 208.85'
12	680.00'	536.09'	N39°16'40"E, 522.31'
13	S16°41'30"W	476.71'	
14	1170.00'	112.64'	S19°27'00"W, 112.60'
15	1170.00'	367.12'	
16	S40°11'10"W	267.15'	
17	N44°20'20"W	515.23'	
18	N62°46'30"W	413.29'	
19	N51°00'20"E	199.74'	
20	N57°51'00"W	653.55'	
21	N41°00'20"W	211.45'	
22	S84°37'20"W	173.63'	
23	N46°29'00"W	95.22'	
24	N76°28'00"W	288.34'	
25	N44°34'40"E	188.38'	
26	N87°23'40"E	517.29'	
27	N82°20'00"E	405.46'	
28	N72°15'10"E	510.32'	
29	N49°14'30"E	383.67'	
30	N65°11'50"W	240.85'	
31	N37°39'40"E	349.22'	
32	N57°56'50"W	334.80'	
33	N85°19'30"W	316.02'	
34	N51°39'00"W	38.97'	
35	N69°38'20"W	198.15'	
36	N88°19'30"W	316.02'	
37	N51°39'00"W	38.97'	
38	N75°55'40"E	492.50'	
39	N9°34'00"E	429.86'	
40	N49°50'50"E	210.56'	
41	N19°15'50"E	194.24'	
42	N49°08'00"W	194.24'	
43	N12°52'00"W	599.97'	
44	N13°06'40"W	253.79'	
45	N33°25'50"W	172.71'	
46	N68°41'20"W	171.71'	
47	S71°19'50"W	463.85'	
48	S80°55'50"W	224.24'	
49	N84°23'40"W	175.28'	
50	S61°49'10"W	302.61'	
51	S85°23'10"W	135.25'	
52	S49°03'40"W	372.67'	
53	N24°19'10"W	160.39'	
54	N21°32'0"E	167.14'	
55	N44°42'50"W	196.89'	
56	N49°14'30"E	283.79'	

Sheet 1 of 2

ELGIN SURVEYING
land surveyors • civil engineers
310 East 6th Street, Rolla, Missouri 65401 • Phone: 573-364-6362 Fax: 573-364-4782 • www.elginurvey.com

REVISIONS	DATE	BY

Plat of
Antler Ridge
Shannon County, Missouri
Classic County
Shannon County, Missouri

DRAWN BY: *meep* SCALE: 1"=400' SURVEY NO.:
CHK'D: _____ DATE: May 17, 2010 K756F

FILED
JUN 1 2010
WELANY WILLIAMS
Circuit Clerk and Ex-Officio Recorder
Bk Pg 170

